



# 2016 Fall Land Prep & Spring Cultivation

[www.globalagexport.com](http://www.globalagexport.com)

## 5 Shank Sub Soil Chisel with Clod Breaker



Requires 250-325 HP Tractor



# Deep Slot Sub Soil Chisel with Clod Breaker and Fertilizer Hoppers

Requires 275-350 HP, GPS controls on tractor

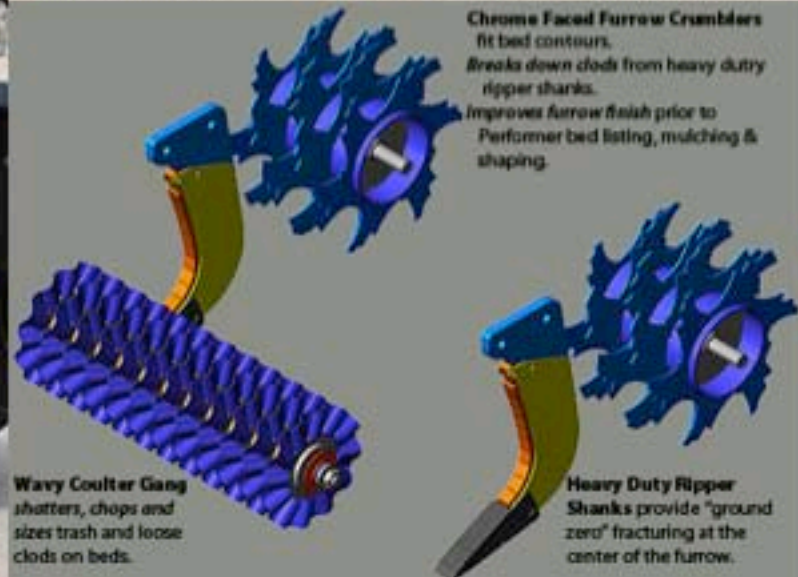




## Wilcox In Furrow Chisel for Permanent Beds

HP 200 to 250 Row crop tractor

Weight 8,870lbs(4,023kg)



**Chrome Faced Furrow Crumblers**  
fit bed contours.  
Breaks down clods from heavy duty ripper shanks.  
Improves furrow finish prior to  
Permanent bed listing, mulching & shaping.

**Wavy Coulters Gang**  
shatters, chops and  
sizes trash and loose  
clods on beds.

**Heavy Duty Ripper  
Shanks** provide "ground  
zero" fracturing at the  
center of the furrow.



**TG Schmeiser Heavy duty 14 ft (4.3 m) Laser Drag Scraper, to be fitted with GPS**



|                         |                           |
|-------------------------|---------------------------|
| Weight 7,000bs(3,115kg) | 170 -230 Hp Field Tractor |
|-------------------------|---------------------------|

# TG Schmeiser Heavy duty 12 ft (3.6 m) wide Tri-Plane

Weight 6,800lbs(3,084kg)    125-200hp Field Tractor





17.3ft (5.3m) wide Domries Wing Fold Semi Stubble Disc

Transportation width 8'ft (2.6m.)

26" (66cm) Diameter blades



Requires Tractor HP

Weight 6,982lbs(3,166kg)



Option 1.





# 12.6ft (3.6m) wide Domries Semi Stubble Disc

50 to 60 ha per day, depending on conditions

Option 2.

Requires Tractor HP 90-150

Weight 7,892lbs(3,580kg)





15ft (4.5m) wide Domries Heavy Stubble Disc

**SERIES OFX  
STUBBLE DISC**



**WHEEL TYPE  
OFFSET DISC HARROWS**



**Option 3.**

Requires Tractor HP

Weight 14,767lbs(6,698kg)

32" (81cm) Diameter blades



# ROME

## OFFSET SCISSOR DISCS WITH HYDRAULIC ANGLE ADJUSTMENT



32" (81cm) Diameter blades

Option 4.

15ft (4.5m) wide Rome Heavy Stubble Disc

Requires Tractor HP 200-300



Weight 5,525Lbs(2,506kg)

3 Row BW Fall Disc Bedder with Rear Bed shapers for Fall and Spring



Bed Shapers are attached on the back for shaping in the bed before transplanting

Requires tractor HP 180-235



# 3 x 152 WILCOX PERFORMER HD

**THIS EQUIPMENT FIRST MAKES THE BEDS AND THEN SHAPES THE BEDS AS SHOWN HERE**

Weight 8,800lbs(3,991kg)

Fall Land Prep Set Up

Tractor HP required 180 to 275



**A Closer Look:**

**Bed Shaper & Shovels:**

**Reel Rotor:** Incorporates trash and mulches bed, Preparing it for a smooth, flat finish.

Puts finishing touches on perfectly shaped, flat bed.



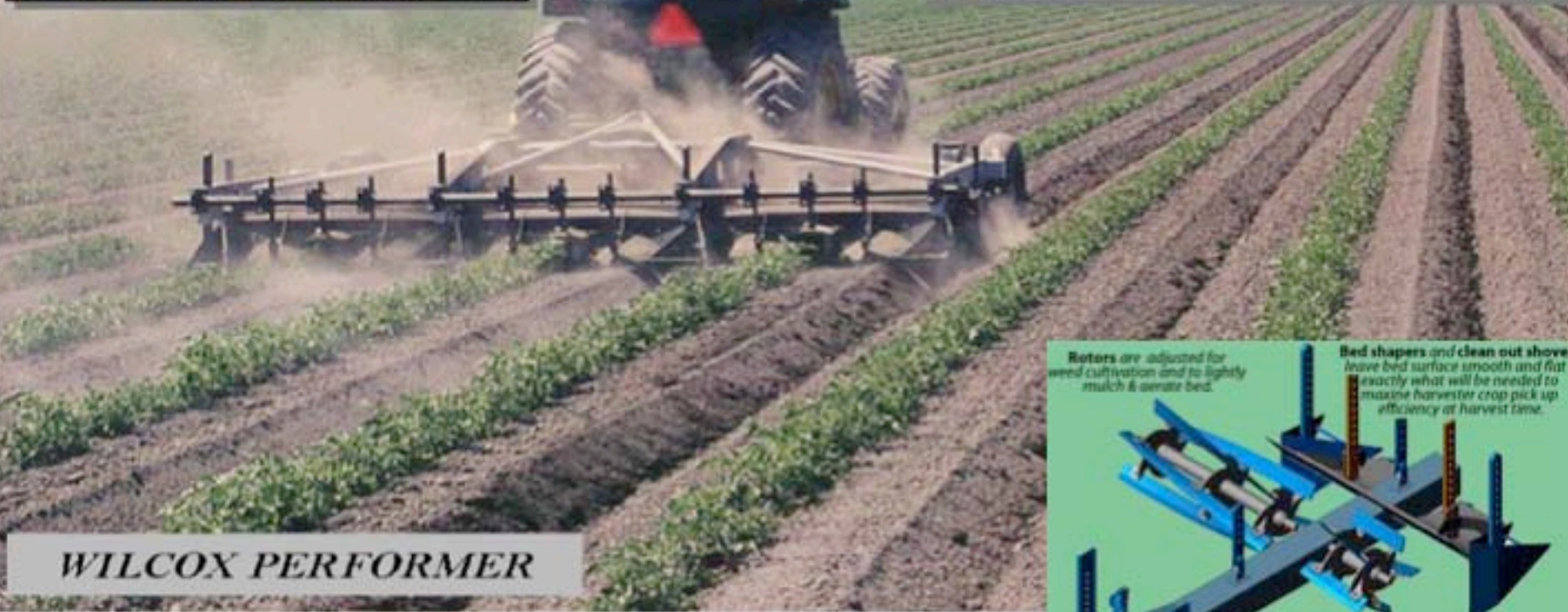
**HD Chisel Shanks:** Fracture beds, eliminate compaction and allow for soil aeration.

**Listing/Clean Out Shovel.** Shape bed and furrow.



# WILCOX 3 BED PERFORMER HD

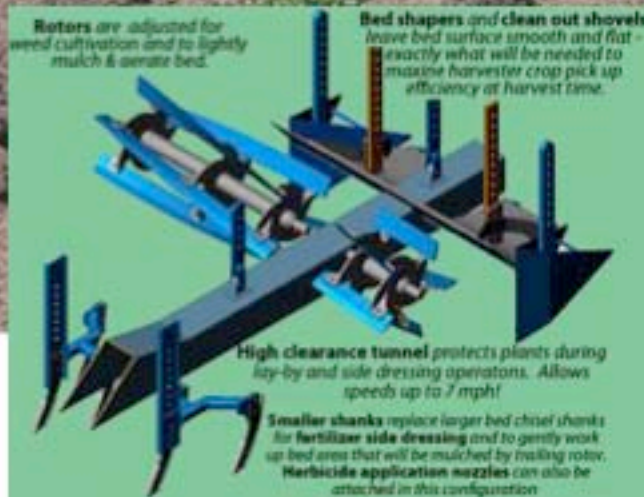
## Spring Cultivation Set Up



**WILCOX PERFORMER**

Weight 8,200lbs(3,719kg)

Tractor HP required 180 to 275









## ITEM 7. 3 X 180cm Andros Engineering Basic Drip Line Injector

20 to 30 ha per day, depending on conditions

Requires Tractor HP  
100-150





## TG Schmeiser Till an' Pack



Used for crust and clod breaking, on beds and on flat, packing beds, emerging seedlings

Weight 4,380lbs(1,986kg)

Requires tractor HP 80-90



**3 BED Granular Fertilizer**

**Hp required 90 -100**

**Weight 1,200lbs(544kg)**





### 3 BED Mechanical Finger Transplanter

Hp required 90 -100

1 Row Model Is Shown



3 Row Model Is Shown



14.04.2009



### 3 BED Mechanical Through Plastic Transplanter

Hp required 90 -100

1 Row Model Is Shown

Option 2.





# 1 Bed Sutton Seeder

Hp required 100

Weight 1,700lbs(771kg)





**3 Bed Wasco Rolling Cultivator**

**Hp required 90 -100**

**Weight 4,720lbs(2,140kg)**

**Pre Plant Cultivation**



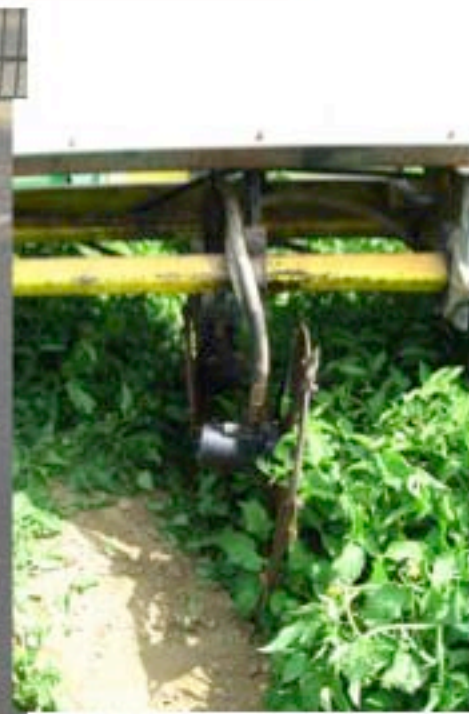
**Spring Cultivation**





**3 Bed KCI Tomato Vine Trimmer.**

Front mounted on 80 to 100 HP row crop tractor





# 3,880L Water transfer tank complete with plumbing Kit

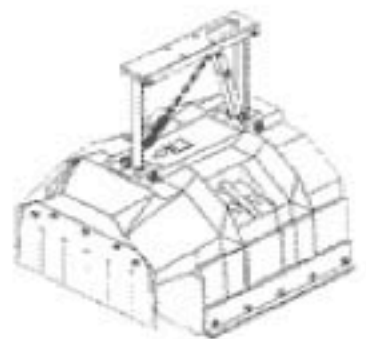


**This Trailer transfers Water to the Transplanter Water Tanks at the end of the field**



# PRECISION HERBICIDE SPRAYER

Hp required 50 -100



28"-32" Adjustable Hood for 36"-40" rows

OPTIMUM SPRAY PATTERNS



10° Spray Band

15° Spray Band

20° Spray Band

12 Row Model Is Shown





**PBM-200 3PT-7560XL-PKG-1**

This sprayer has the perfect combination of a sturdy frame and high quality chemical resistance. This 200 gallon 3-Point sprayer package comes standard with a silver series roller pump, adjustable field boom, remote manual four valve control, and an aluminum spray gun kit.

**Features:**

- ◆ 200 gallon polyethylene tank
- ◆ Steel powder coated frame
- ◆ PTO driven 7560XL roller pump
- ◆ 16-24 foot field boom with quick change double swivel nozzles
- ◆ Four valve stainless steel remote spray control post
- ◆ 43L aluminium spray gun with 25 feet of 1/2 inch hose



**FOR PRECISION APPLICATION OF FUNGICIDE or Insecticides**

**How Application Kit**

**23770 Adjustable Flow Application Kit**  
 For applying pre-emergence chemicals over crop rows.  
 \*Note: Model 23770 is equipped without spray gun and hoses.

**Features:**

- ◆ Arms adjustable for length and angle without removing fully, easily locked.
- ◆ Available with stainless steel arms.
- ◆ Positioning one arm at proper angle automatically sets correct angle of second arm.
- ◆ 4 1/2" square of round nozzles at 1" 1/2" diameter.
- ◆ 60 includes standard and Quick-Change nozzle holder.
- ◆ Side nozzle holder may be added.
- ◆ Minimum pressure of 125 PSI is best.
- ◆ Spray gun and hose are not included.
- ◆ To order use Part number: 23770-02

**Determining Application Rates:**

| Nozzle | Distance |   |   |   |   |   |
|--------|----------|---|---|---|---|---|
|        | 0        | 1 | 2 | 3 | 4 | 5 |
| 1/2"   | 0        | 1 | 2 | 3 | 4 | 5 |

To determine application rate (GPA) within a treated spray band, multiply selected GPA by the appropriate conversion factor.





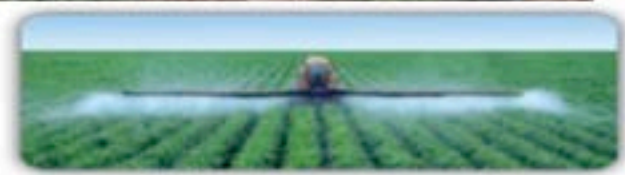
# Jacto Air Boom Sprayer

80 to 100 HP row crop tractor

Weight 1,609lbs(730kg)



Air-Assist Boom System On



Air-Assist Boom System Off





## Heavy Duty Row Crop Shredder.

HP 100 Row Crop Tractor



Pulverizer XL Crop Shredder



## High capacity 3 Bed Andros Engineering Drip Line Retrieval Machine



Requires Tractor HP 200-250